



exocad

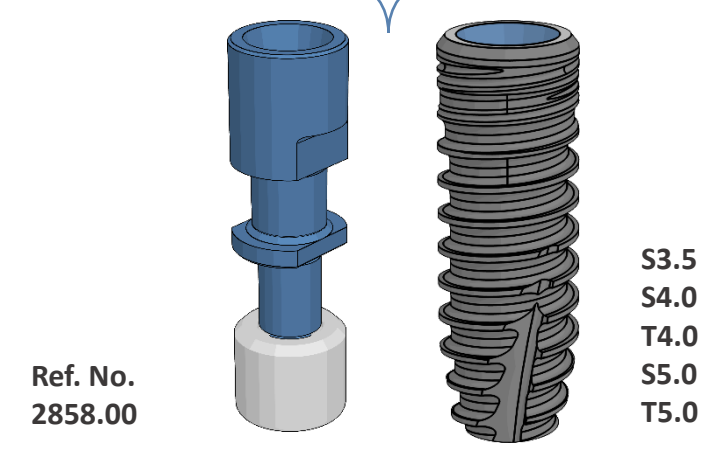
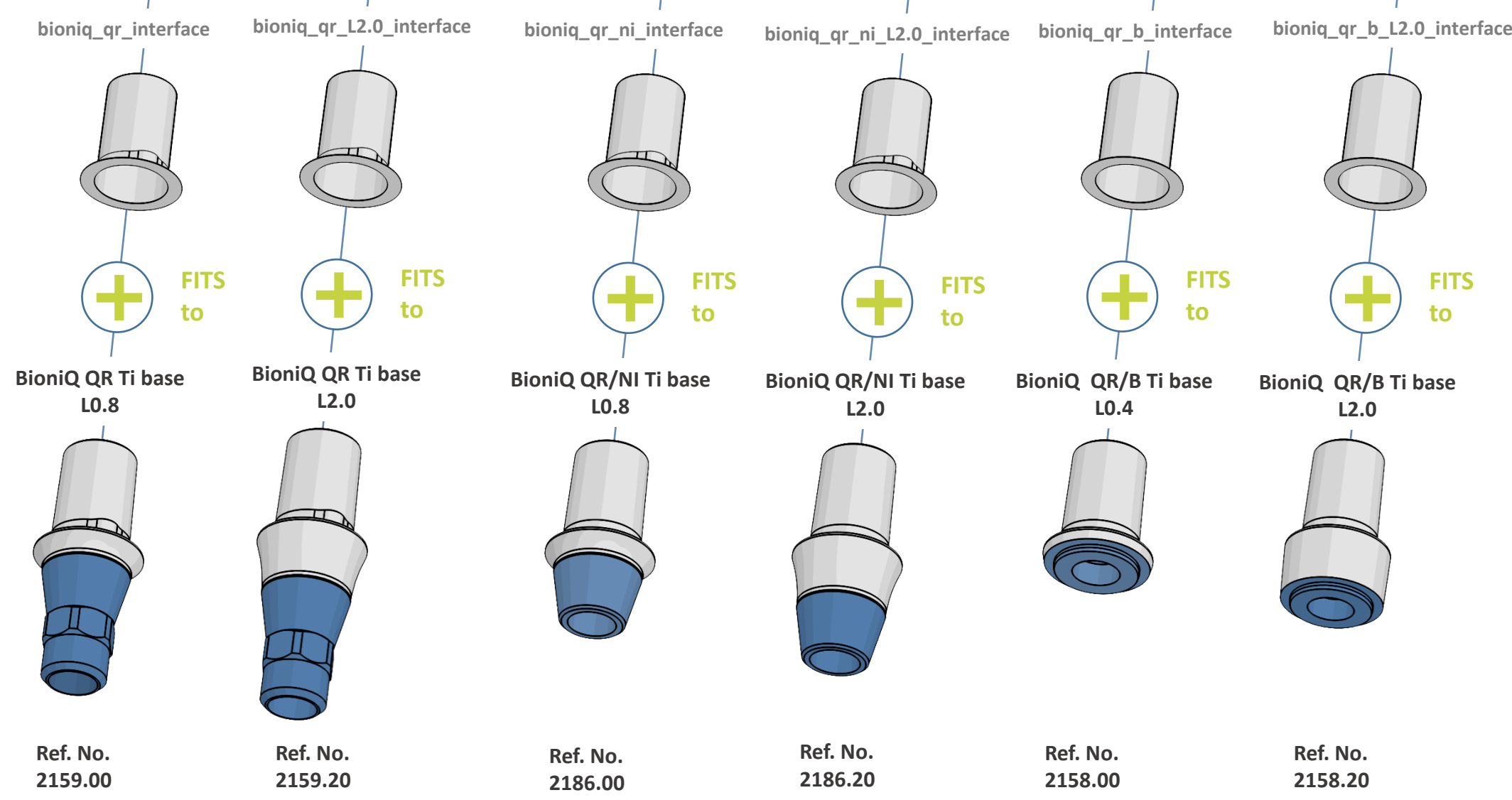
LASAK BioniQ QR Exocad library structure

Scanbody QR, indexed – long
Ref. No. 2815.00



Dummy base shown
in the Exocad library

The real base of the
BioniQ component





exocad

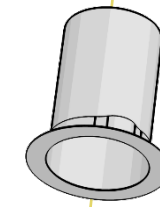
LASAK BioniQ QN Exocad library structure



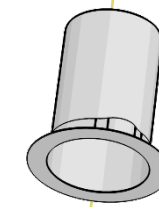
Scanbody QN, indexed – long
Ref. No. 2840.00

Dummy base shown
in the Exocad library

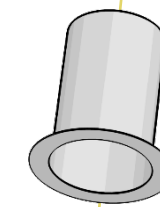
bioniq_qn_interface



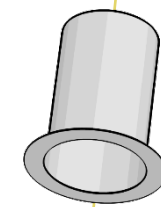
bioniq_qn_L2.0_interface



bioniq_qn_ni_interface



bioniq_qn_ni_L2.0_interface



FITS
to



FITS
to

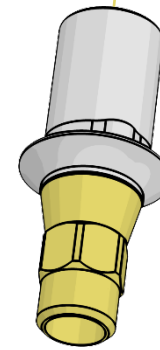


FITS
to



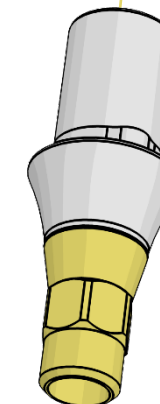
FITS
to

BioniQ QN Ti base
L0.8



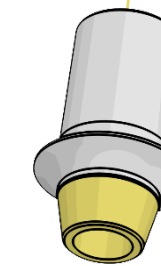
Ref. No.
2181.00

BioniQ QN Ti base
L2.0



Ref. No.
2181.20

BioniQ QN/NI Ti base
L0.8



Ref. No.
2189.00

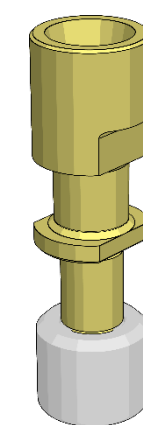
BioniQ QN/NI Ti base
L2.0



Ref. No.
2189.20

The real base of the
BioniQ component

Ref. No.
2859.00



S2.9

