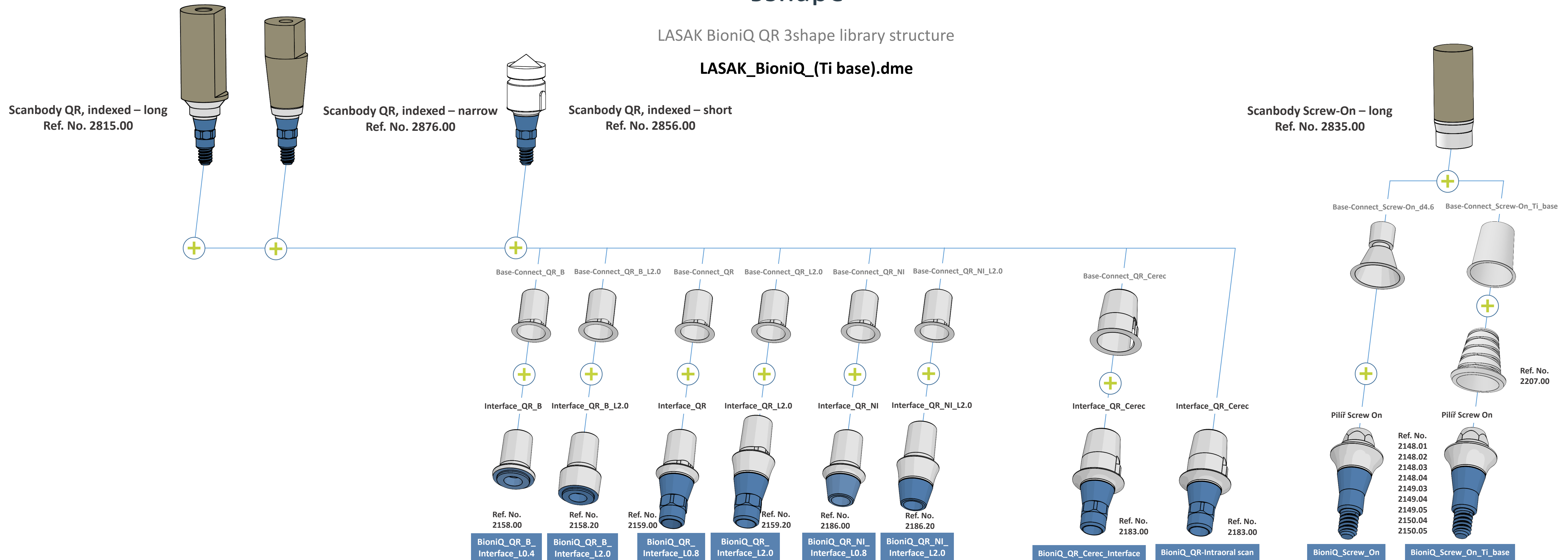


LASAK BioniQ QR 3shape library structure

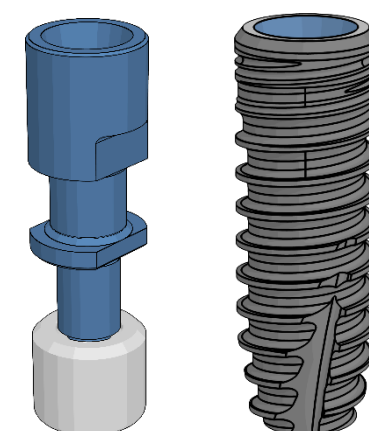
LASAK_BioniQ_(Ti base).dme



Free library

LASAK_BioniQ_(Ti base).dme

Ref. No.
2858.00



S3.5
S4.0
T4.0
S5.0
T5.0

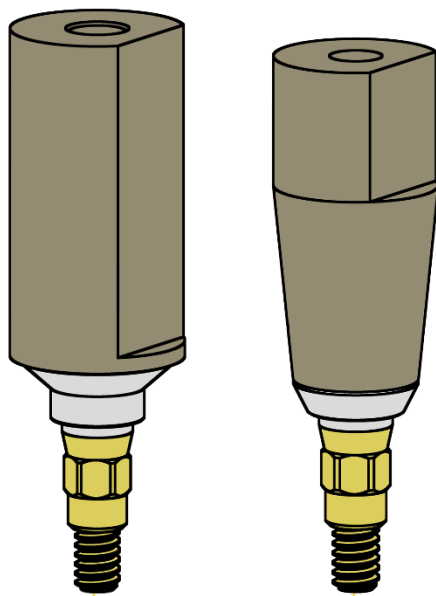
For more information, see our video called „How to import LASAK implant library to 3Shape.flv.“



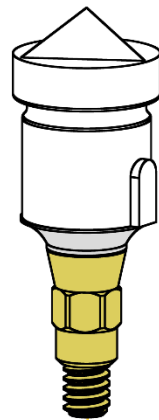
LASAK BioniQ QN 3shape library structure

LASAK_BioniQ_(Ti base).dme

Scanbody QN, indexed – long
Ref. No. 2840.00



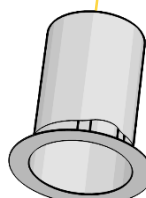
Scanbody QN, indexed – narrow
Ref. No. 2877.00



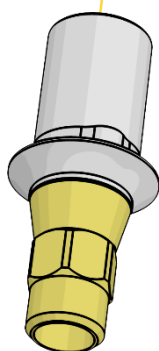
Scanbody QN, indexed – short
Ref. No. 2870.00



Base-Connect_QN



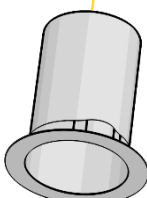
Interface_QN



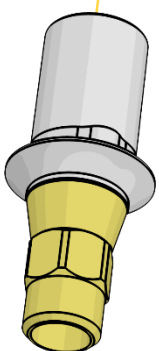
Ref. No.
2181.00

BioniQ_QN_interface_L0.8

Base-Connect_QN_L2.0



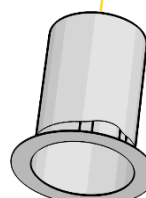
Interface_QN_L2.0



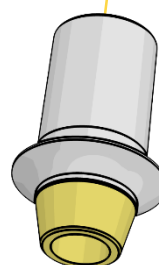
Ref. No.
2181.20

BioniQ_QN_interface_L2.0

Base-Connect_QN



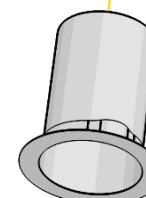
Interface_QN_NI



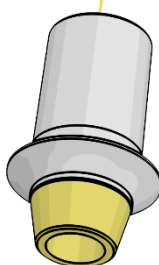
Ref. No.
2189.00

BioniQ_QN_NI_interface_L0.8

Base-Connect_QN_L2.0



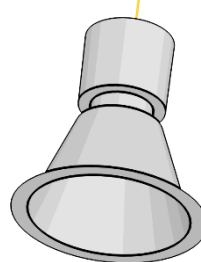
Interface_QN_NI_L2.0



Ref. No.
2189.20

BioniQ_QN_NI_interface_L2.0

Base-Connect_Screw-On_d4.6



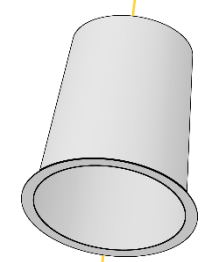
Pilif Screw-On



Ref. No.
2177.01
2177.02
2177.03
2177.04

BioniQ_Screw_On

Base-Connect_Screw-On_Ti_base



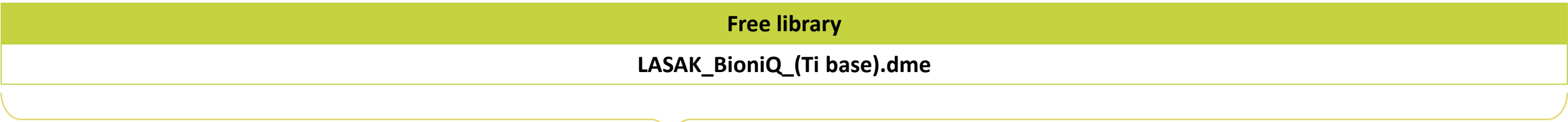
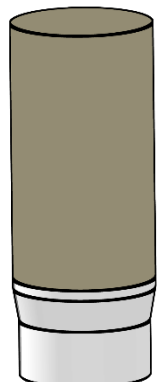
Pilif Screw-On



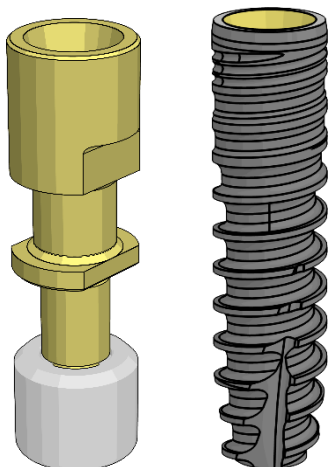
Ref. No.
2207.00

BioniQ_Screw_On_Ti_base

Scanbody Screw-On – long
Ref. No. 2835.00



Ref. No.
2859.00



S2.9

For more information, see our video called „How to import LASAK implant library to 3Shape.flv.“