

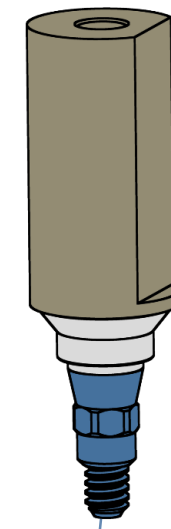


exocad

LASAK BioniQ QR Exocad library structure

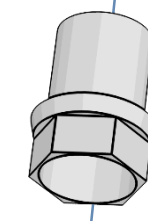
**LASAK\_BioniQ\_(one piece).zip**

Scanbody QR, indexed – long  
Ref. No. 2815.00

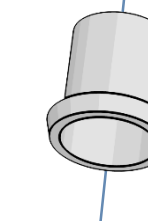


Dummy base shown  
in the Exocad library

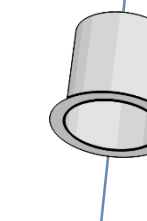
bioniq\_qr\_d



bioniq\_qr\_ni\_d



bioniq\_qr\_b\_d



CAM replaced

BioniQ QR



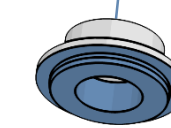
CAM replaced

BioniQ QR/NI



CAM replaced

BioniQ QR/B

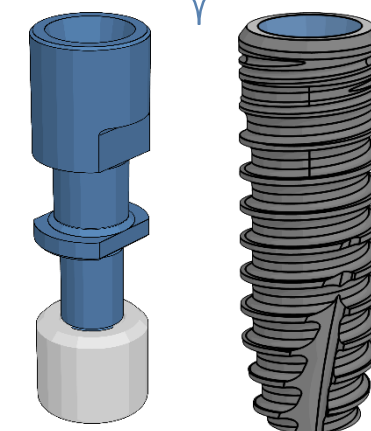


The real base of the  
BioniQ component

Manufactured only by LASAK

LASAK\_BioniQ\_(one piece).zip

Ref. No.  
2858.00



S3.5  
S4.0  
T4.0  
S5.0  
T5.0

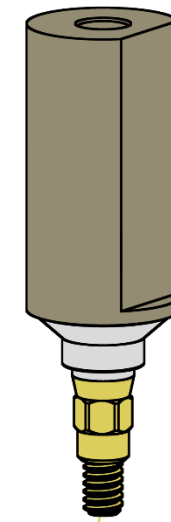


exocad

LASAK BioniQ QN Exocad library structure

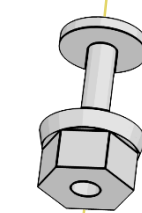
### LASAK\_BioniQ\_(one piece).zip

Scanbody QN, indexed – long  
Ref. No. 2840.00



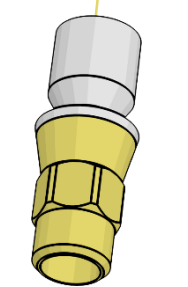
Dummy base shown  
in the Exocad library

bioniq\_qn\_d



**CAM  
replaced**

BioniQ QN

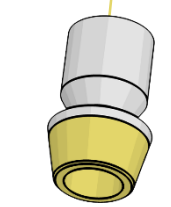


bioniq\_qn\_ni\_d

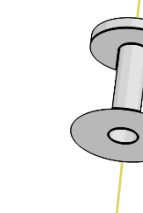


**CAM  
replaced**

BioniQ QN/NI

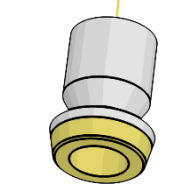


bioniq\_qn\_b\_d



**CAM  
replaced**

BioniQ QN/B

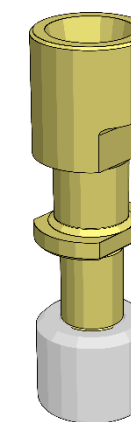


The real base of the  
BioniQ component

Manufactured only by LASAK

LASAK\_BioniQ\_(one piece).zip

Ref. No.  
2859.00



S2.9

